

State of Wyoming Corner Record

(In compliance with the *CORNER PERPETUATION AND FILING ACT*, Wyoming Statutes, 1997 Section 33-29-140 et. seq., and the Rules and Regulations of the Board of Professional Engineers and Professional Land Surveyors)

Reverse side of this form may be used if more space is needed.

Record of original survey and citation of source of historical information (if corner is lost or obliterated). Description of corner monumentation evidence found and/or monument and accessories established to perpetuate the location of this corner. Sketch of relative location of monument, accessories, and reference points with course and distance to adjacent corner(s) (if determined in this survey). Method and rationale for reestablishment of lost or obliterated corner.

LOCATION: East Quarter Corner of Section 3, T12N, R67W, 6th Principal Meridian, Laramie County.

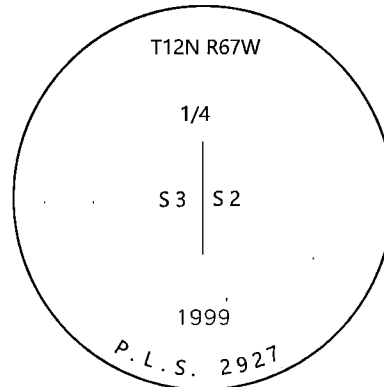
RECORD: GLO - Set conglomerate stone 13x7x6

1998 - Doyle Abrahamson, PLS 599, found 10x5x4 stone with "1/4" chiseled.

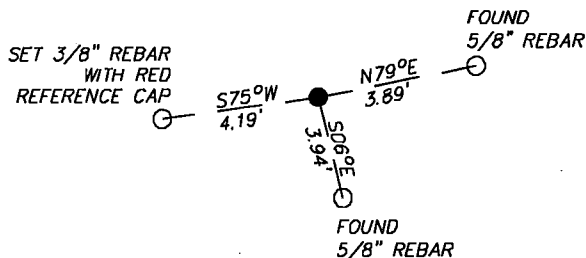
1999 - Paul Reid, PLS 2927, of A.V.I., p.c., found a 11x5x3.5 granite stone with "1/4" scribed in north face. He set a 2.5" aluminum pipe with a 3.25" aluminum cap and buried the original stone as a memorial to the south.

RECOVERED: 2019 - Westwood Professional Services found a 3.25" aluminum cap, LS 2927, in a mound of stones.

RESET: Accepting location of the aluminum cap as the location of the corner and set ties as shown.



Monument Inscription



Date of Field Work: 9/10/2019

Office Reference: 22237.01

Cross Index Plat

	1	2	3	4	5	6	7	8	9	10	11	12	13	14	15	16	17	18	19	20	21	22	23	24	25		
A																											A
B																											B
C			6			5				4					3						2						C
D																											D
E																											E
F																											F
G																											G
H																											H
J																											J
K																											K
L																											L
M																											M
N																											N
O																											O
P																											P
Q																											Q
R																											R
S																											S
T																											T
U																											U
V																											V
W																											W
X																											X
Y																											Y
Z																											Z
	1	2	3	4	5	6	7	8	9	10	11	12	13	14	15	16	17	18	19	20	21	22	23	24	25		

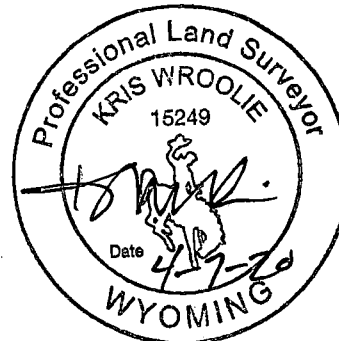
Firm/Agency, Address

Westwood Professional Services
3701 12th St. N. Ste. 206
St. Cloud, MN 56303

This corner record was prepared by me or under my direction and supervision.

SEAL & SIGNATURE

Telephone Number: (320)-253-9495



REC# #: 775798
 RECORDED 4/15/2020 AT 10:13 AM BK# 2668 PG# 230
 Debra K. Lee, CLERK OF LARAMIE COUNTY, WY PAGE 1 OF 1

Corner Name East Quarter Corner Section 3, T 12 N, R 67 W, 6th P.M.

Cross-Index No.: C-17

County: Laramie Wyoming

SBRPEPLS/PLSW: March 1994; PLSW January 1998